

YC560



The energy-saving excavator uses the principle of energy recovery and release, and relies on the core capability of the hydraulic power system to redefine the tonnage, power, bucket capacity, fuel consumption and work efficiency of the excavator. It opens up a new space for excavators, realizes a double return on investment, and saves energy consumption by up to 38%.

Guangxi Yuchai Heavy Industry Co., Ltd.
Address: Yuchai Engineering Machinery Industry Center, Luchuan, China
Tel: +86-775-3223503
Fax: +86-775-3223503
Email: dig@yuchai.cn, ychi-export@yuchai.cn
Website: www.yuchaicm.com

Specifications are subject to change without prior notice

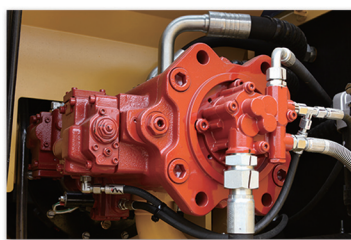
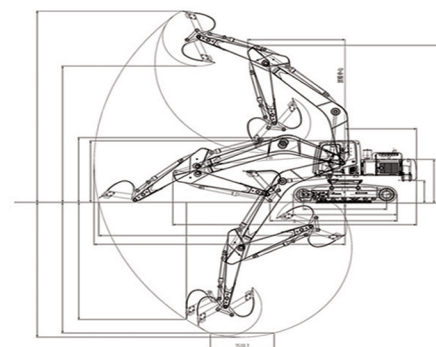
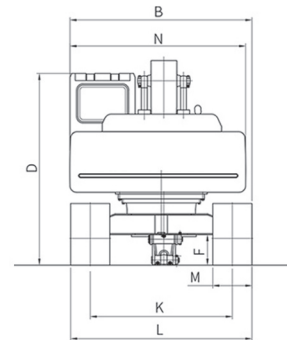
 **YUCHAI**
HEAVY INDUSTRY
— Since 1989

Product characteristics

- ① Wide range of applications, one machine with multiple functions: four working modes can be switched at will, and a variety of accessories are available
- ② More stable hydraulic pressure: Negative flow control, depth adjustment, precise power matching
- ③ Sturdy structure and better workmanship: high-strength materials are used, and cast steel or iron castings are used for key parts

Core components

- ① Engine: Cummins QSM11 fully electronically controlled engine is adopted, which is powerful, safe and reliable.
- ② Main pump: a new generation of main pump with leading technology, adopting the latest technology, higher efficiency, increased bearing journal capacity, and improved reliability.
- ③ Main valve: Customized debugging, excellent performance, more coordinated action of the whole machine, and higher efficiency.
- ④ Oil cylinder: Add a boom cylinder to recover potential energy when the boom is falling, and release potential energy when the boom is raised to achieve high efficiency and energy saving.



Technical Specification

Basic parameter

Machine weight	51 T	Track gauge	4378 mm
Bucket capacity	2.4 m ³	Length of track	5388 mm
Engine model	CUMMINS QSM11	Length to center of rollers	2740 mm
Engine power	280/2100 kW/rpm	Track gauge	3340 mm
Max. Gradeability	35°	Width of track	600 mm
Max. digging force of arm	241.2 kN	Max. digging height	10310 mm
Max. digging force of bucket	269.3 kN	Max. dumping height	7120 mm
Traveling speed	4.8/3.0 km/h	Max. digging depth	7018 mm
Max. hauling force	368 kN	Max. vertical digging depth	6390 mm
Ground Contact Pressure	96.1 rpm	Maximum excavation depth (mm) when digging out a 2.5m horizontal plane	6845 mm
Type and flow rate of pump	380*2 L/min	Maximum digging distance	11408 mm
Working Pressure	33(35) Mpa	Maximum excavation distance at ground level	11186 mm
Hydraulic oil tank capacity	335 L	Minimum radius of gyration	4895 mm
Overall length	12300 mm	Maximum height at minimum turning radius	9342 mm
Overall width	3340 mm	Distance from center of rotation to rear end	3845 mm
Overall height (boom top)	3970 mm	Thickness (mm) of track teeth	36 mm
Overall height (Cab top)	3280 mm	Height between platform and ground	2835 mm
Ground clearance of counterweight	1335 mm	Arm length	2900 mm
Height between undercarriage and ground	590 mm	Boom length	7060 mm
Platform tail turning radius	3845 mm		