



# YC135S

## CE Amphibious excavator

Total Weight :	18600 kg
Standard bucket capacity:	0.52 m <sup>3</sup>
rated power :	86 kW

- Excellent performance
- Low fuel consumption
- High efficiency
- Suitable for working conditions of swampland, fishpond, canal, river etc.

# YC135S

## Amphibious excavator

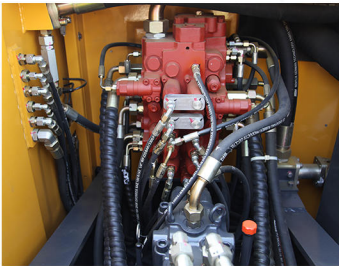
Freely go cross Mountains and rivers in rain or shine!

### 1 New electric control hydraulic pump



New generation renowned brand electric control hydraulic pump  
Intelligent control to realize precise match of engine and hydraulic pump  
Excellent operation efficiency  
Reinforced Rotating structure  
Low noise  
High reliability

### 2 Renowned brand hydraulic valve



International famous brand control system  
High coordination for composite movements  
Easy assessing hydraulic valve block  
High reliability

### 3 Bucket

Bucket capacity 0.52m<sup>3</sup>  
Durable Reinforced material to prolong service life



### 4 Optional equipment

Lengthening arm  
Which can expand the scope of construction and apply to more working conditions.



# YC135S

YC135S is a brand new customized special excavator product developed by Yuchai heavy industry. It is widely adaptable to different working conditions. With outstanding excavating performance and moderate tonnage, it is suitable for river dredging, ditch cleaning and urban construction and rural reconstruction.



## YUCHAI Engine

- ✓ Carefully matched and created by the expert team, perfect power system
- ✓ Strong torque, sufficient reserves, low fuel consumption and fast response
- ✓ Bosch common rail system and integrated DCU post-processing control, stable and reliable.
- ✓ Yuchai's sixth generation gold power, which has won the gold award in the industry for many consecutive years.
- ✓ Global leading service system, convenient maintenance and low maintenance charge

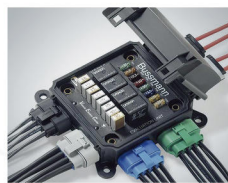


## 5 Comfortable driving experience



Optimal design air conditioning, the refrigeration capacity is increased by 20% and the air volume is increased by 53%.

Suspended two-way sliding seat, which can be adjusted freely, makes driving more comfortable.



The electrical harness adopts high standard connector central distribution box, with high integration, high reliability and convenient maintenance.



7-inch high-resolution color large screen, clearer and easier to identify

## 6 Tracks of Amphibious excavator

Simple installation and easy maintenance. Suitable for walking in swamps, fish ponds, lakes, canals, rivers and other similar working conditions.

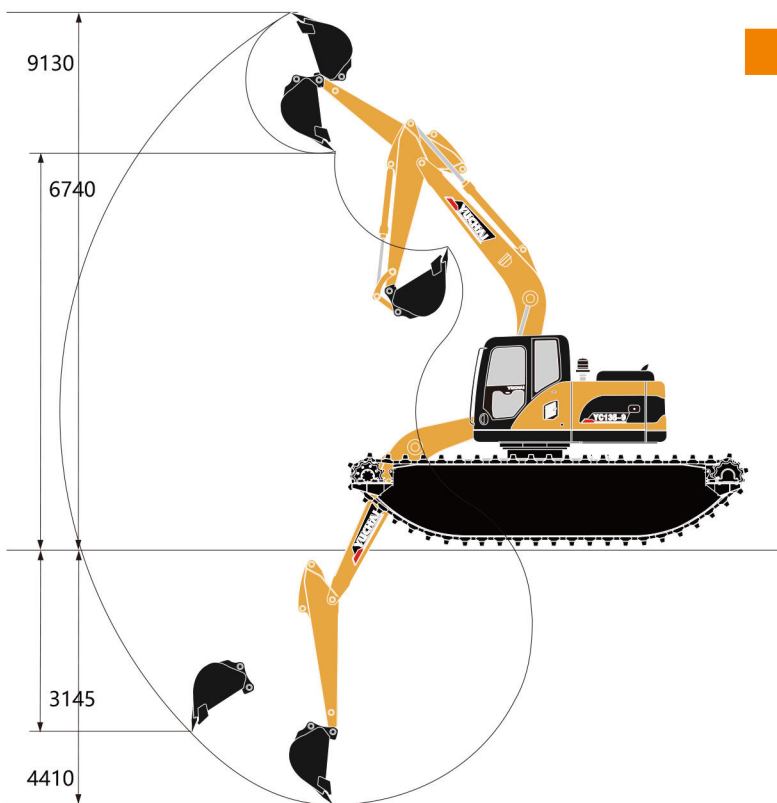
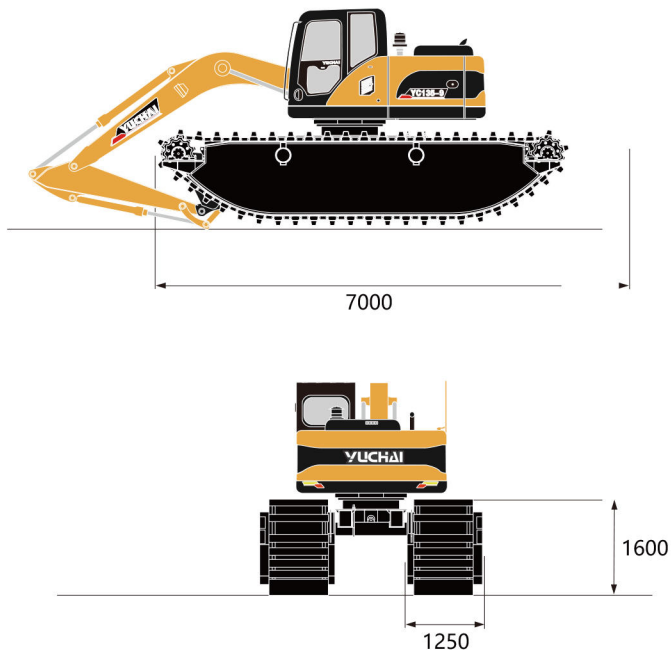


# Main Applications

Swamps, salty land, off-shore, river area and so forth



➤ Standard bucket capacity: 0.52m<sup>3</sup>、Maximum wading depth: 1600mm、Work efficiency:100m<sup>3</sup>/h



## ► Technical specifications

### Basic parameter

Machine weight	18600 kg
Engine power	86 kW
Standard bucket capacity	0.52 m <sup>3</sup>

### Dimensions

Length of Boom	4600 mm
Length of Stick	2250 mm
Length of Pontoon	7000 mm
Width of Pontoon	1250 mm
Height of Pontoon	1600 mm
Width of Chassis	3700 mm

### Operating parameters

Max. wading depth	1600 mm
Work efficiency	100 m <sup>3</sup> /h
Max. digging height	9130 mm
Max. dumping height	6740 mm
Max. digging depth	4410 mm
Max. Vertical digging depth	3145 mm
Max. digging radius	8065 mm
Max. digging radius on ground level	7720 mm

Guangxi Yuchai Heavy Industry Co.,Ltd.  
 Address: No.168 Tianqiao Road, Yulin, Guangxi, China  
 Tel: +86-775-3223503  
 Fax: +86-775-3223503  
 Email: dig@yuchai.cn, ychi-export@yuchai.cn  
 Website: www.yuchaicm.com

Specifications are subject to change without prior notice